

WEEKLY INCIDENT SUMMARY

Week ending Friday 23 July 2021


This incident summary provides information on reportable incidents and safety advice for the NSW mining industry. To report an incident to the NSW Resources Regulator: phone 1300 814 609 24 hours a day, 7 days a week.

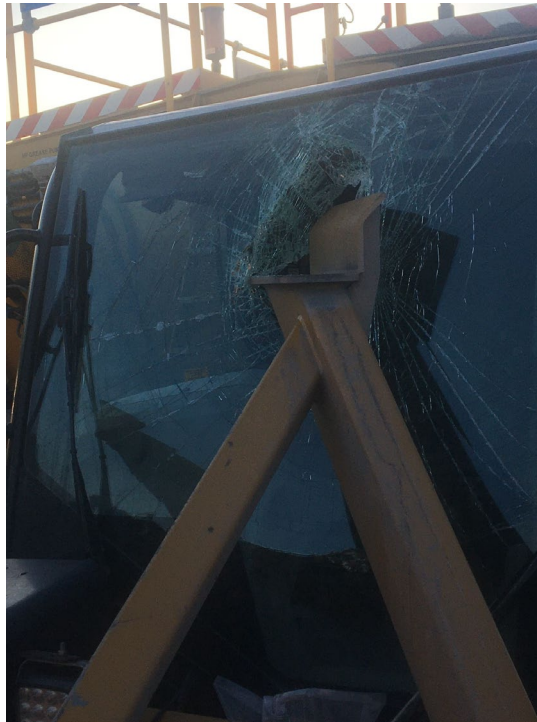
At a glance

High level summary of emerging trends and our recommendations to operators.

TYPE	NUMBER
Reportable incident total	33
Summarised incident total	3

Summarised incidents

INCIDENT TYPE	SUMMARY	COMMENTS TO INDUSTRY
Dangerous incident IncNot0040317 Open cut coal mine  Roads or other vehicle operating areas	A service cart entered an operational drill area and parked facing the front of a drill rig. The drill rig trammed forward and one of the drill support cradle arms made contact with the hand rail and windscreen of the service cart. Visibility from the drill cabin was poor due to dust on the windows and glare from the sun. The service cart operator did not establish positive communications with the drill rig operator. There were no injuries.	Operators of plant must establish positive communications before entering the work area of other mobile plant. All mine operators must have well established procedures for such communications and workers have a legal obligation to follow those procedures. Our recent campaign focused on the risk of collisions involving heavy mining equipment. Refer to: Vehicle incidents - heading in the wrong direction



Dangerous incident
IncNot0040327
Open cut coal mine



Fire or explosion

A haul truck caught fire while driving on a haul road. Another truck operator noticed that the fire suppression system had activated and alerted the operator. The operator was able to exit the truck before it became engulfed in flames.

The cause of the fire is being investigated. Further information may be published later.



Dangerous incident
IncNot0040361
Open cut coal mine

An elevated work platform (EWP) was being driven toward the ramps of a low loader when it slipped off the edge of the deck. The operator was in the basket of the EWP at the time. A spotter was helping to guide the operator during the unloading process. The operator was thrown from the basket and sustained a fractured vertebra.

Mine operators must have controls in place to manage the risk of EWP's overturning during loading and unloading activities. EWP's should be matched appropriately to the size of the transport vehicle (length and width) and be centrally positioned on the deck or tray. Operators should plan loading and unloading tasks and final machine position before commencing the task.



Other publications of interest

The incidents are included for your review. The NSW Resources Regulator does not endorse the findings or recommendations of these incidents. It is your legal duty to exercise due diligence to ensure the business complies with its work health and safety obligations.

PUBLICATION	ISSUE/TOPIC
	National (other, non-fatal)
DMIRS (WA)	New safety and health report – The latest quarterly (Jan to March 2021) safety and health report is now available. Details
Resources Safety and Health, Queensland (Coal mines)	Coal mine worker trapped by moving vehicle – safety alert #394 A coal mine worker was between a stationary light vehicle and some pallet racking, in a workshop, while a colleague was undertaking the prestart checks on the vehicle. The colleague started the engine of the light vehicle while standing

beside the driver's door. The vehicle's transmission was in reverse at the time. When the engine started, the light vehicle moved backwards, injuring, and trapping the worker between the pallet racking and the vehicle tray.

[Details](#)

Resources Safety and Health, Queensland (Mineral Mines and Quarries) **May 2021 Incident periodical**
[Details](#)

Note: While the majority of incidents are reported and recorded within a week of the event, some are notified outside this time period. The incidents in this report therefore have not necessarily occurred in a one-week period. All newly recorded incidents, whatever the incident date, are reviewed by the Chief Inspector and senior staff each week. For more comprehensive statistical data refer to our annual performance measures reports.

© State of New South Wales through Regional NSW 2020 You may copy, distribute, display, download and otherwise freely deal with this publication for any purpose, provided that you attribute Regional NSW as the owner. However, you must obtain permission if you wish to charge others for access to the publication (other than at cost); include the publication in advertising or a product for sale; modify the publication; or republish the publication on a website. You may freely link to the publication on a departmental website.

Disclaimer: The information contained in this publication is based on knowledge and understanding at the time of writing (May 2020) and may not be accurate, current or complete. The State of New South Wales (including Regional NSW), the author and the publisher take no responsibility, and will accept no liability, for the accuracy, currency, reliability or correctness of any information included in the document (including material provided by third parties). Readers should make their own inquiries and rely on their own advice when making decisions related to material contained in this publication.

DOCUMENT CONTROL

CM9 reference	DOC21/625391
Mine safety reference	ISR21-29
Date published	30 July 2021
Approved by	Deputy Chief Inspector Office of the Chief Inspector