

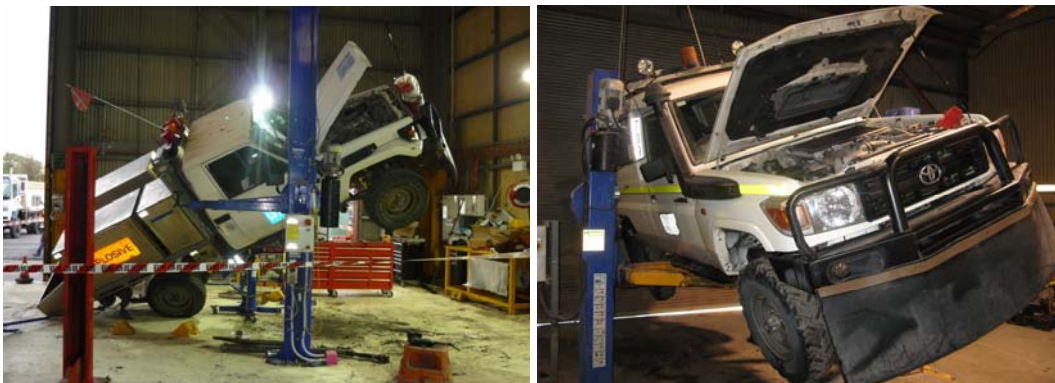
SAFETY BULLETIN

Two-post light vehicle maintenance hoists

BACKGROUND

Many mines are now installing light vehicle service hoists to improve the availability of site vehicles. Typically there are two types of hoist used for this purpose: two-post and four-post.

The increased installation of two-post hoists is causing concern due to recent incidents of vehicles becoming unstable on the lifting arms and subsequently falling off the hoist.



RECOMMENDATIONS

Prior to the purchase of any vehicle hoist, consideration should be given to AS 1418.9:1996 *Cranes (including hoists and winches) Vehicle Hoists* and the design registration compliance requirements of clause 136(3) of the *Occupational Health and Safety Regulations 2001*.

Also, AS 2550.9:1996 *Cranes – Safe Use – Vehicle Hoists* has relevant information on the selection, operation and maintenance of vehicle hoists.

All mines operating two-post light vehicle hoists should:

- Ensure that periodic maintenance complies with the OEM's recommendations and site requirements and conditions.
- Ensure that the wire balance ropes used by these hoists are thoroughly inspected by competent people and are correctly adjusted.
- Ensure only competent people with the relevant skills, knowledge, experience and capabilities are employed to maintain and operate the hoist.
- Ensure service personnel complete a pre-operational inspection prior to using the hoist to ensure all safety critical systems comply with the original design criteria as a minimum.
- Provide specific training and information for people servicing light vehicles on these hoists, if required, to ensure:
 - Personnel are aware of the centre of gravity for each type of vehicle to be serviced to enable them to correctly position the lifting arms and ensure the load is in equilibrium prior to lifting.
 - An understanding of centre of gravity changes and the likely consequences if components are removed or added while servicing.
 - That excess material, loose tools and anything that may roll or move are removed from utility trays prior to servicing.
 - The area in and around the hoist is isolated when raising and lowering vehicles.

NOTE: Please ensure all relevant people in your organisation receive a copy of this Safety Bulletin, and are informed of its content and recommendations. This Safety Bulletin should be processed in a systematic manner through the mine's information and communication process. It should also be placed on the mine's notice board.

Signed



Rob Regan
DIRECTOR
MINE SAFETY OPERATIONS BRANCH
NSW DEPARTMENT OF PRIMARY INDUSTRIES

View more safety alerts at www.dpi.nsw.gov.au/minerals/safety/safety-alerts. If you would like to receive safety alerts by email, send your contact details to mine.safetyalert@dpi.nsw.gov.au