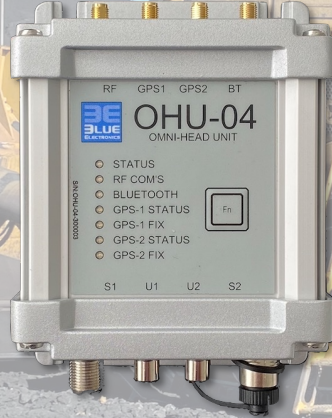


Mobile Plant Collision Awareness Detection System (CAS/SCAS/PDS)



Improving Mobile Plant & Stockpile Management Safety

What it does...

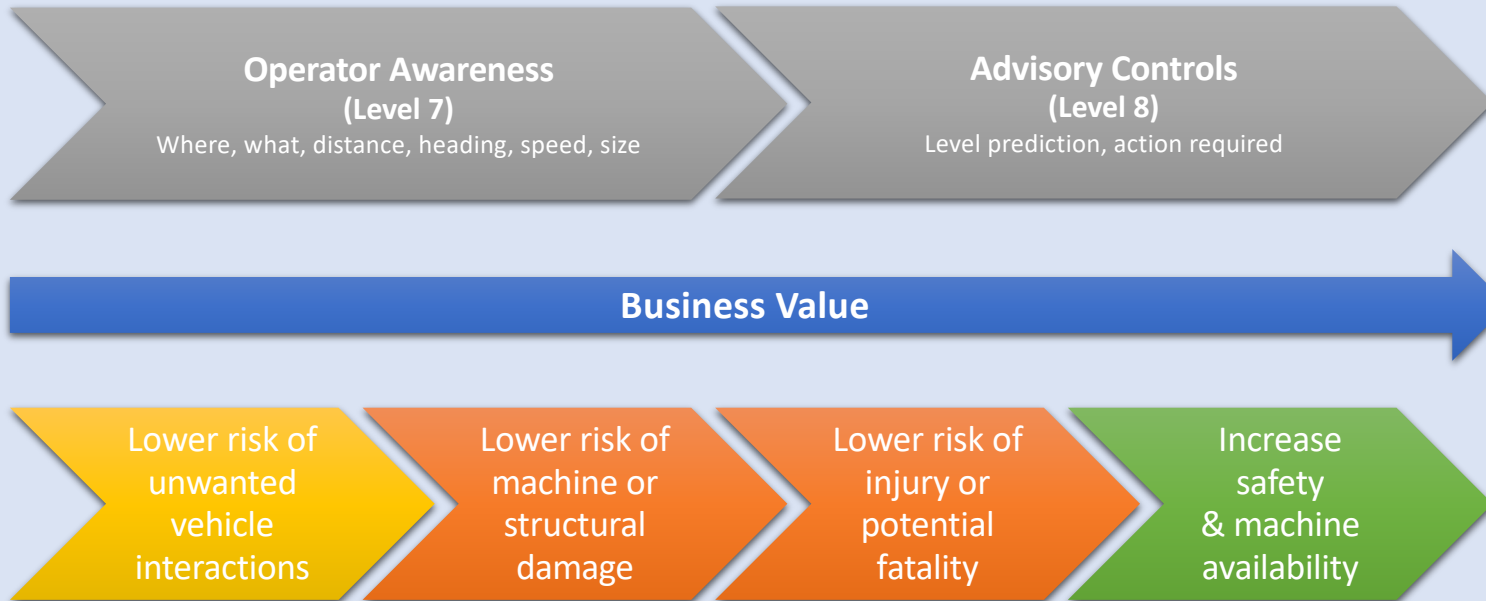


The Blue Electronics Collision Awareness & Proximity Detection System is a GPS based system that provides both visual and audible warnings for mobile plant and vehicle operators if they enter one another's detection zones or the zones of objects like structures, conveyors or underground feeders or valves.

- ✓ GPS based
- ✓ Designed for mobile plant and vehicles
- ✓ Has configurable warning & alert zones
- ✓ Provides visual and audible alarms
- ✓ Logging
- ✓ Remote maintenance & monitoring (optional)
- ✓ Corrected GPS (RTK) for improved accuracy (optional)
- ✓ Not difficult to installation

Vehicle Interaction System (EMESRT-PR5)

The technologies provides alerts / alarms (Via Audible / Speech / Visual) to enhance the operator ability to predict a potential unsafe interaction and the corrective action required



What's required...

Each item of mobile plant is fitted with the following hardware:

- Operators Control Panel (OCP)
- Omni Head Unit (OHU)
- RF & 2xGPS Antennas



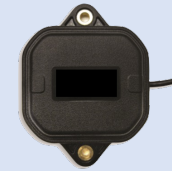
OCP



OHU



RF



GPSx2

Operators Control Panel (OCP)...

The OCP is mounted inside the operator's cabin within reach and view of the operator.

- ✓ IP40 7" Colour Touch Screen with RAM Ball Mount
- ✓ Adjustable Screen Brightness with auto or manual day/night mode
- ✓ Adjustable volume
- ✓ Points of Interest Warnings
- ✓ Geofence Warnings (Structures etc.)
- ✓ Supports multiple RTK Base Stations
- ✓ Customisable (mp3) Alarm files
- ✓ Event and Alarm Logging
- ✓ Ethernet, RS485 & CAN Bus communications
- ✓ Local or Remote updating
- ✓ 12-24Vdc



OCP



Omni-directional Head Unit (OHU)...

The OHU can be mounted inside the operator's cabin or outside in a suitable enclosure.

- ✓ Compact EMC/EMI IP56 rated surface mount enclosure
- ✓ LED Status Indication with auto off to avoid operator distraction
- ✓ Licenses free 900Mhz radio (M2M, M2P Communication)
- ✓ Dual Precision GPS receivers (+/-2.5m , +/-20mm assisted)
- ✓ Configurable object profile settings
- ✓ Configurable overspeed setting
- ✓ Configurable warning & alert settings
- ✓ Wifi, Bluetooth, RS485 & RS232 communications
- ✓ Assignable I/O (2DI, 2DO)
- ✓ Local or Remote updating
- ✓ 12-24Vdc



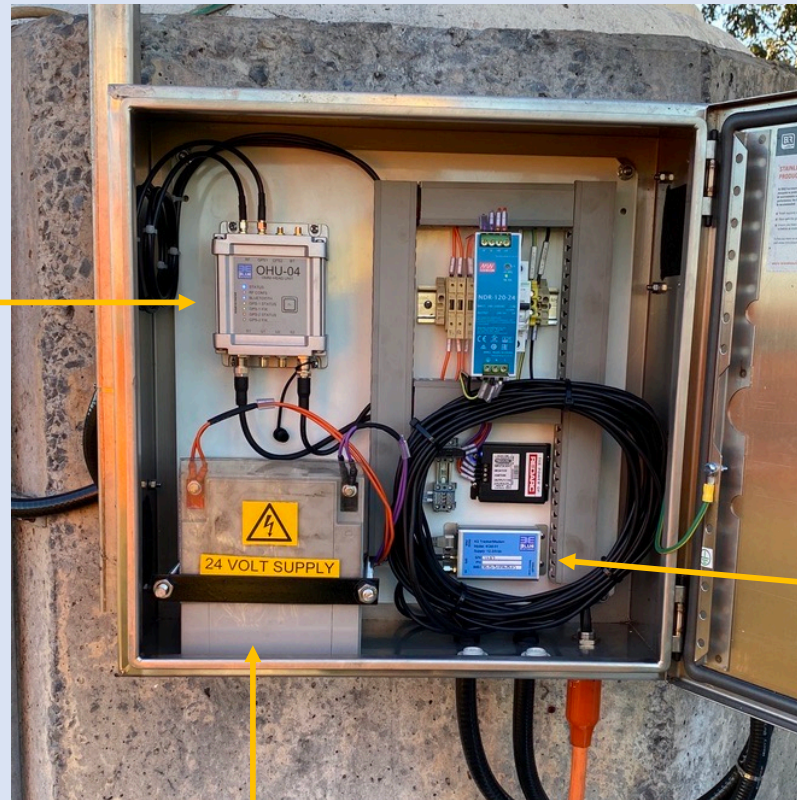
OHU



Typical Fixed Base Station

OHU-04

- Precision GPS
- Radio Transceiver
- Modbus RTU Master
- RTK Base Station

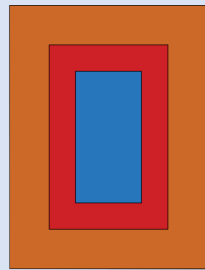


Mains/Solar Powered, Battery Backed

Remote Monitoring
• 3/4/4Gx Modem

Typical types of detection zones...

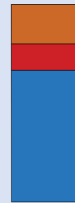
The size of the detection zones can be adjusted enabled or disabled to suit the application.



Uniform



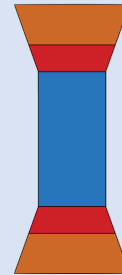
Front &
Rear



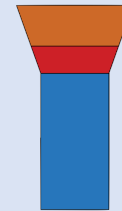
Front
only



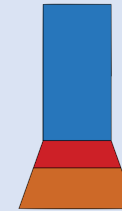
Back
only



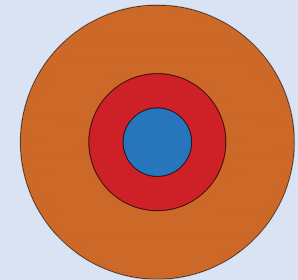
Splayed
Front &
Rear



Splayed
Front
only



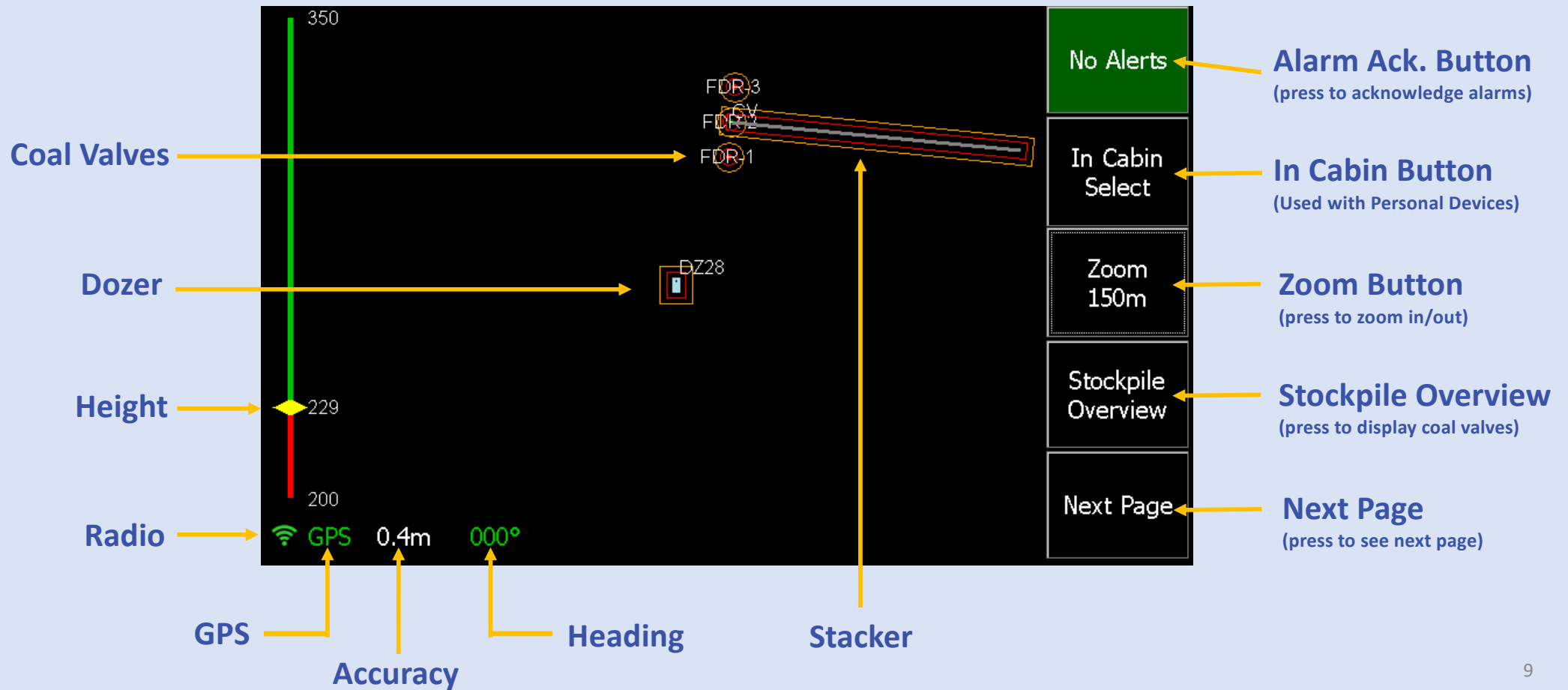
Splayed
Rear
only



Circular

What the Operators sees...

Stockpile application shown



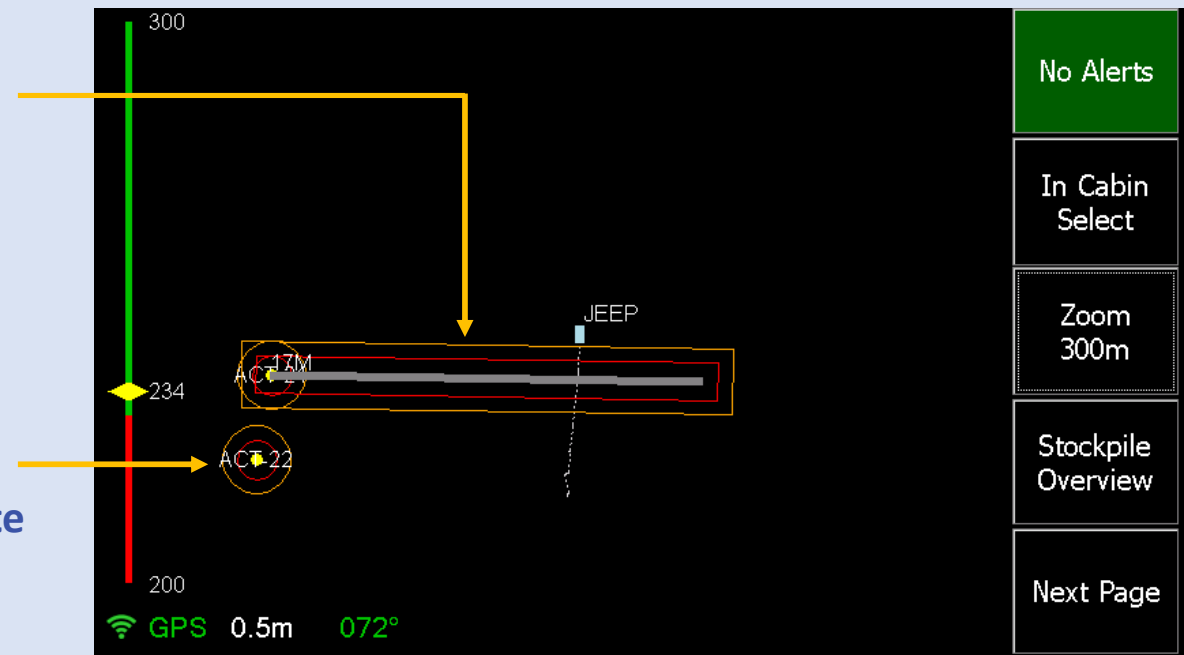
Typical Coal Valve & Stacker Display...

Stacker/Conveyor

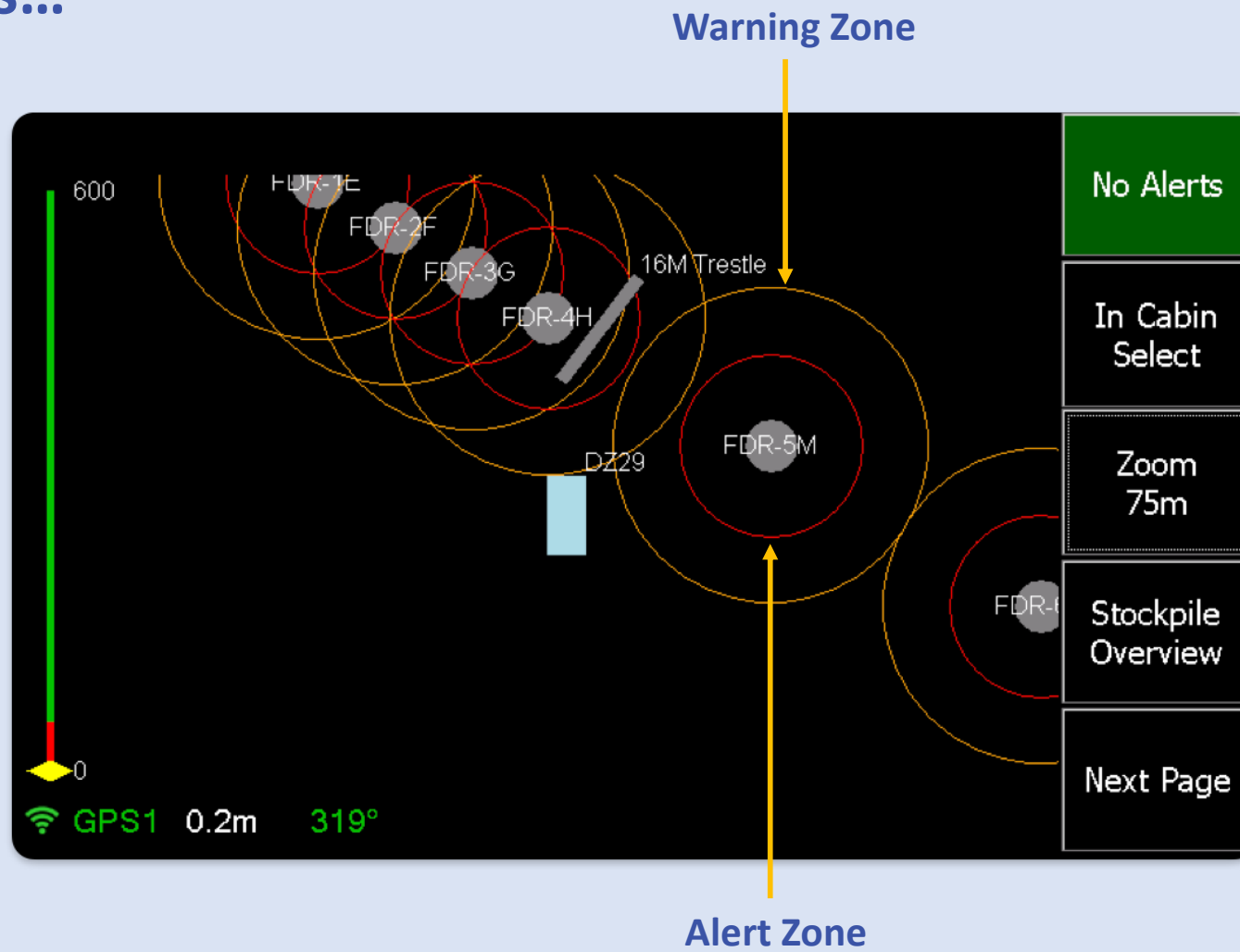
- Configurable zones
- Can be a virtual or dynamic objects
- Adjustable pivot point (ideal for radial stackers)

Coal Valves

- Configurable Zones
- Grow depending on Dozer Altitude
- Adjustable Angle of repose
- Valve changes colour depending on state



Typical Views...



Typical Views...



Coal Valve "FDR-2F"

The diagram shows a vertical stack of components: FDR05M, 16M Trestle, FDR04H, FDR03G, FDR02F, FDR01E, and DZ29. Concentric circles represent detection ranges around the stack.

Warning! Click to accept

In Cabin Select

Zoom 150m

Stockpile Overview

Next Page

600

240

0

GPS1 0.2m 080°

Coal Valve "FDR-1E"

The diagram shows a vertical stack of components: FDR05M, 16M Trestle, FDR04H, FDR03G, FDR02F, FDR01E, and DZ29. Concentric circles represent detection ranges around the stack.

Alert! Click to accept

In Cabin Select

Zoom 150m

Stockpile Overview

Next Page

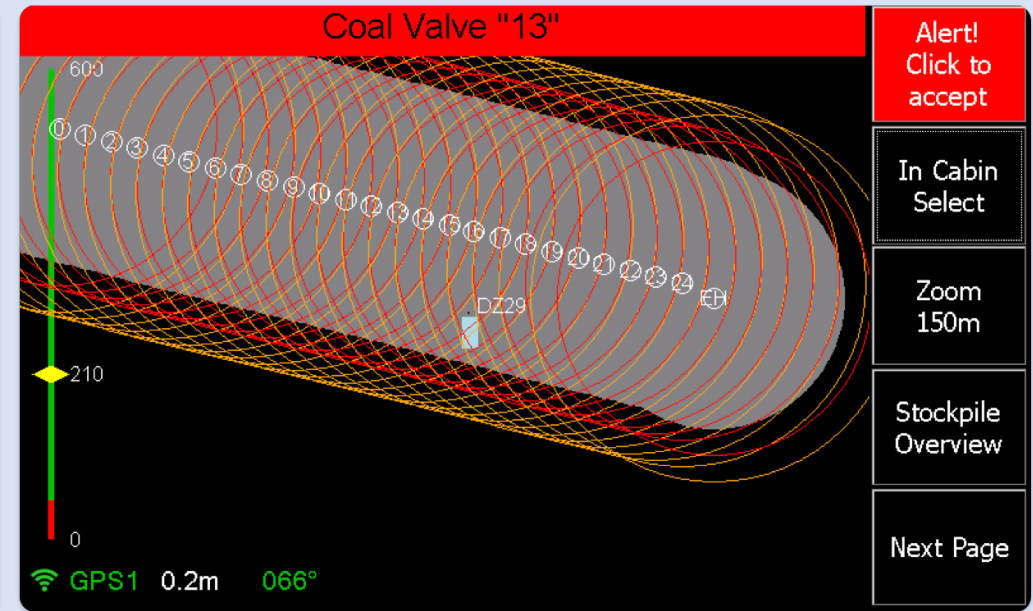
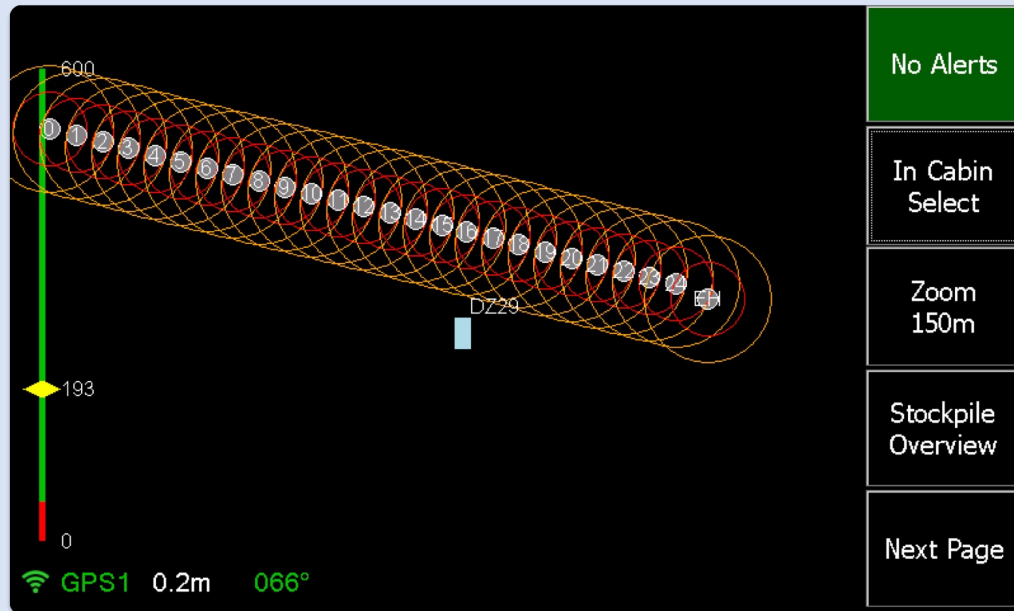
600

240

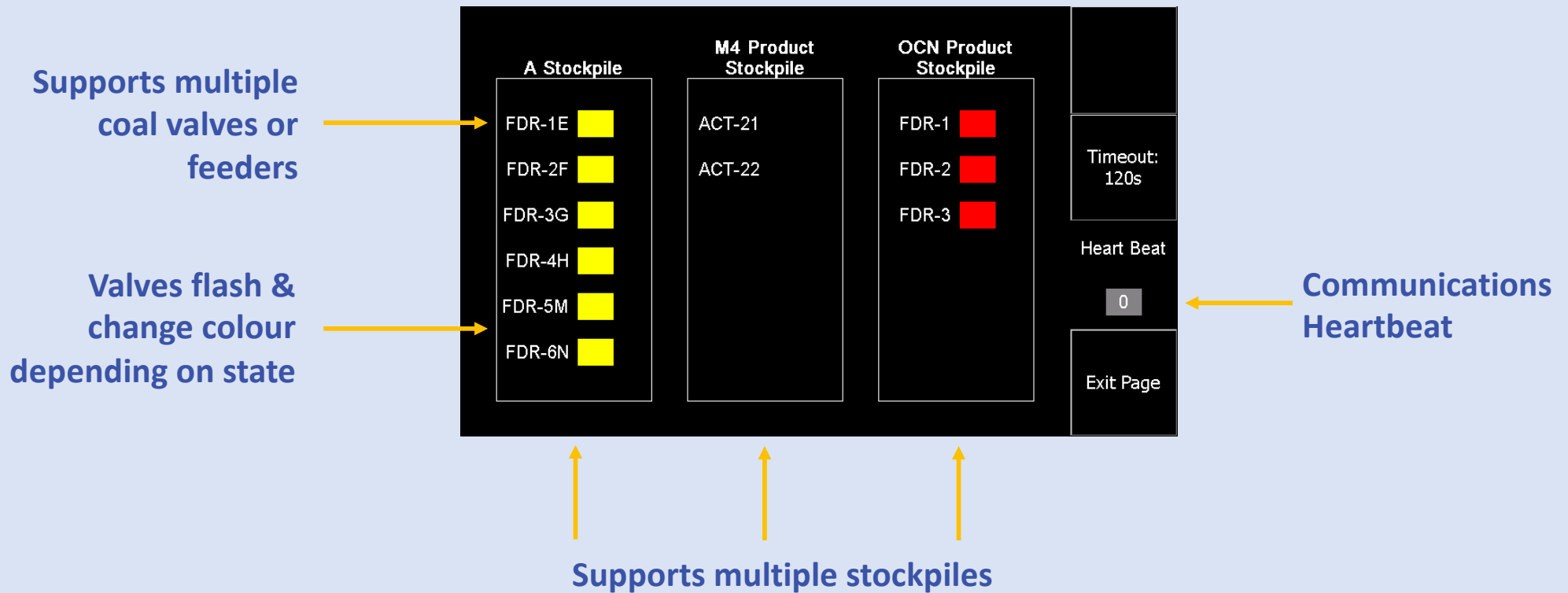
0

GPS1 0.2m 080°

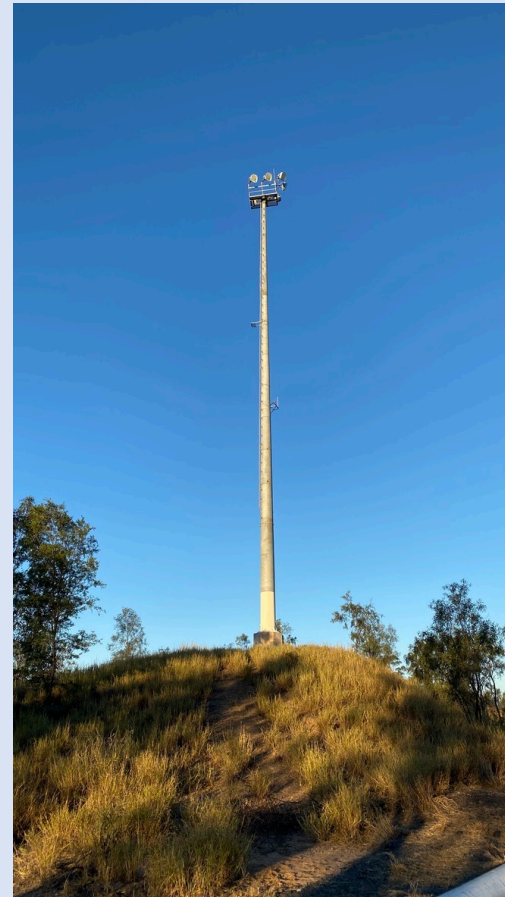
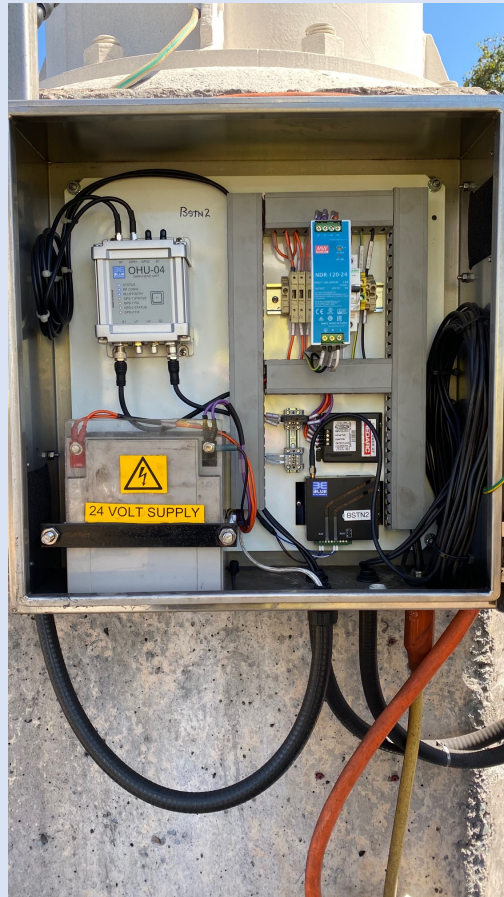
Typical Views...



Typical Coal Valve Overview Display...



Typical Base Station Installation Photos...



Typical Stacker Installation Photos...



Typical Dozer Installation Photos...



What it can be used on...



The system can be fitted to almost any type of mobile plant including:

- Dragline
- Excavator
- Shovel
- Dump Truck
- Loader
- Dozer
- Grader
- Service Truck
- Water Cart
- Crane
- People Carrier
- Light Vehicle
- Rail Maintenance Machine
- Hi Rail Vehicle Lighting Plant
- Generator
- Drilling Rig
- Stacker/Reclaimers on Stockpiles
- Etc.

Types of Alarms...



The system can provide both visual and audible warnings for the following situations:

- ✓ Breaching a Warning Zone
- ✓ Breaching an Alert Zone
- ✓ Overspeed
- ✓ Entering or Leaving a Geofenced area
- ✓ Approaching a virtual hazard i.e., Warning or Information sign, Restricted area, Powerline crossing, Conveyor, Coal Valve etc..

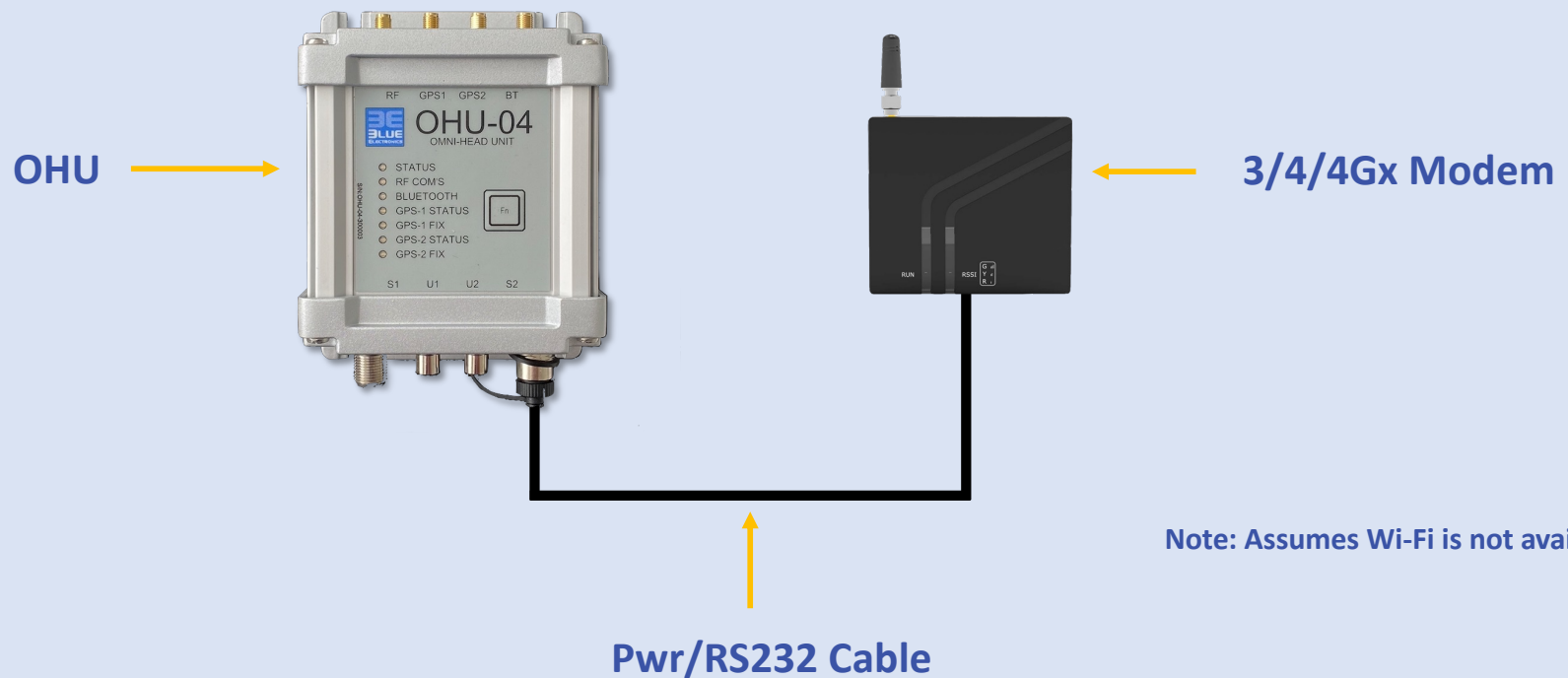
Remote Maintenance...

The system can be remotely maintained from your desktop using our Device Manager Software and our Remote Maintenance Gateway.

- ✓ Check & update software versions
- ✓ Check & update device settings
- ✓ Download or upload device settings
- ✓ View device location and surrounding device in list or map view
- ✓ Download logs from an OCP
- ✓ Download or upload Geofence or POI files
- ✓ Subscription include NEW feature releases



Typical Remote Gateway Modem

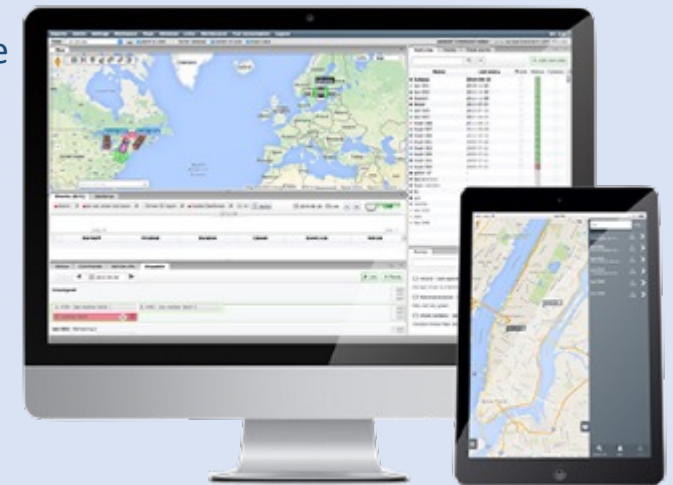


Note: Assumes Wi-Fi is not available

Remote Monitoring...

The location and status of each machine, worker or pedestrian can be remotely monitoring on our WebPortal.

- ✓ Google Maps Web based monitoring system
- ✓ Monitor device location in near real time on desktop or mobile devices
- ✓ Create Reports available online or via scheduled Email
- ✓ Create Events and get safety breaches via SMS or Email
- ✓ Replay track history or download for external evaluation
- ✓ Create geofences & POI
- ✓ Configure plant groups and workspaces
- ✓ Supports 3rd party Trackers
- ✓ Subscription include NEW feature releases



RTK Corrected GPS...

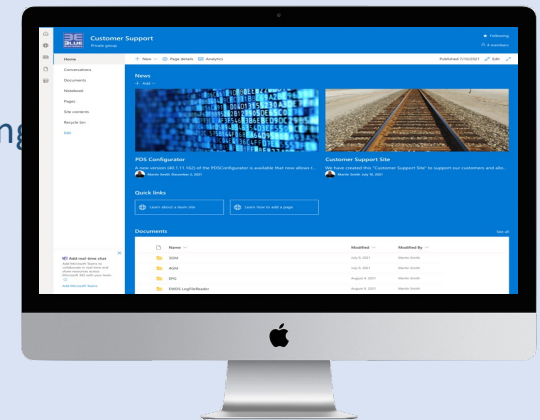
If you need a higher precision for working across multiple tracks, lanes or designated work sites, then we can provide RTK correction using either our fixed Base Station or the AllDayRTK service which operates the highest-density network of Continuously Operating Reference Stations (CORS) in Australia.



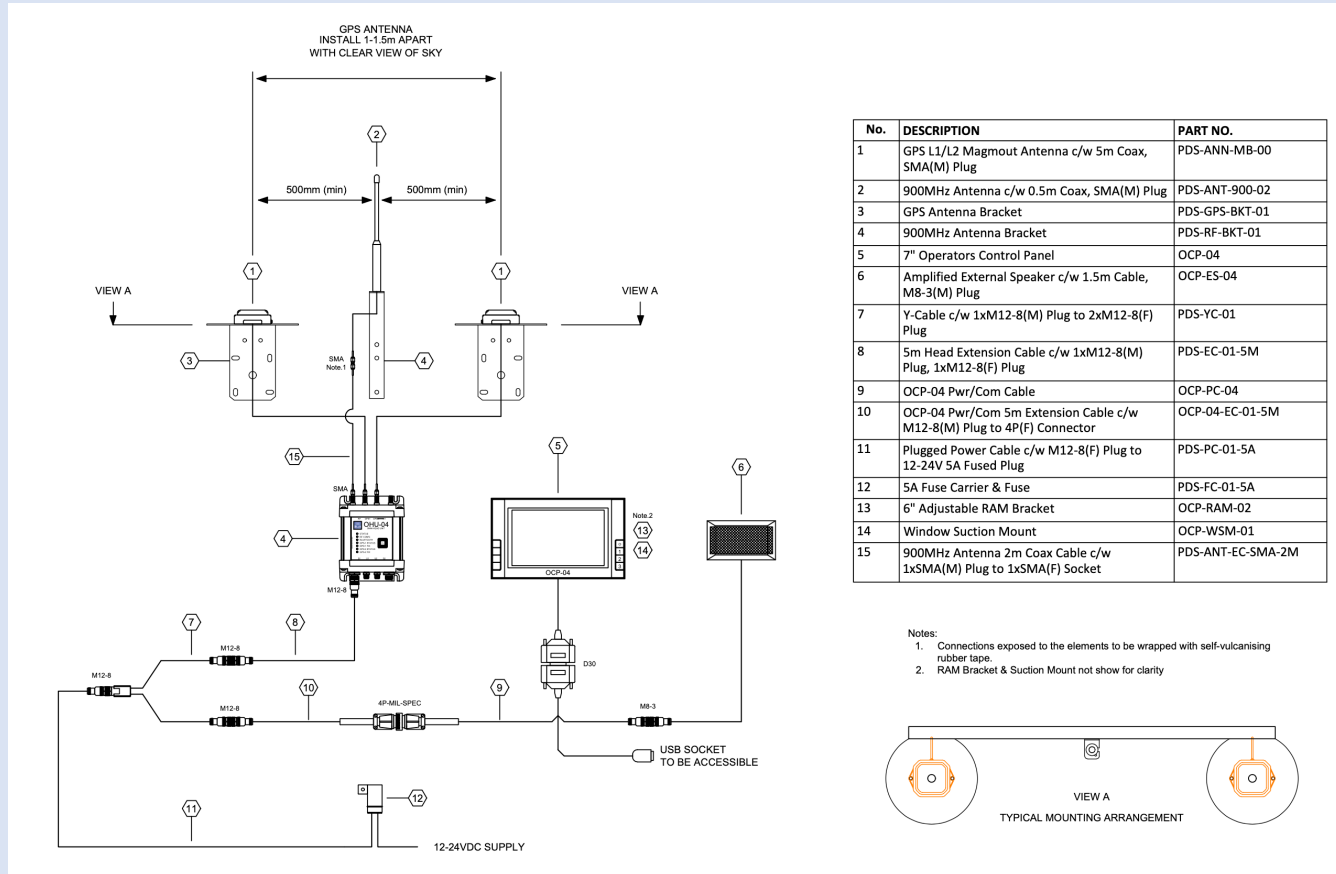
Remote Customer Support...

Using Microsoft SharePoint, Remote Customer Support provides you access to the latest product information and software updates all in one location.

- ✓ Access 24/7 to current product information & software
- ✓ Keep up to date with product news and technical bulletins
- ✓ Create your own notifications so you are kept informed when anything changes



Typical installation...





Basic specifications...



Operators Control Panel:

Display: 7" Colour Touch Screen

OS: MS Windows CE6.0 Professional or Linux

External Speaker: Yes

Mounting: RAM adjustable Bracket

Rating: IP40

System Voltage: 12~24Vdc



Omni-Head Unit:

Accuracy: +/- 1m relative un-assisted +/- 0.02m assisted

Rotational accuracy: 0.3deg

Speed accuracy: 0.05m/s

Range: >5km LOS, <1.5km NLOS

Mounting: Surface

Rating: IP56

Indications: Status, RF, BT, GPS1, GPS1 Fix, GPS2, GPS2 Fix

System Voltage: 12~24Vdc



End - Thank you

Stay Safe

**Blue Electronics Pty Ltd
U6-45 Township Drive
West Burleigh Qld 4220
E: sales@blueelectronics.com.au
Martin Smith
P: +61 (0) 427 010 236**

Australian Designed, Made & Supported

