

WEEKLY INCIDENT SUMMARY

Week ending Friday 14 October 2022

This incident summary provides information on reportable incidents and safety advice for the NSW mining industry. To report an incident to the NSW Resources Regulator: phone 1300 814 609 24 hours a day, 7 days a week.

At a glance

High level summary of emerging trends and our recommendations to operators.

TYPE	NUMBER
Reportable incident total	2
Summarised incident total	42

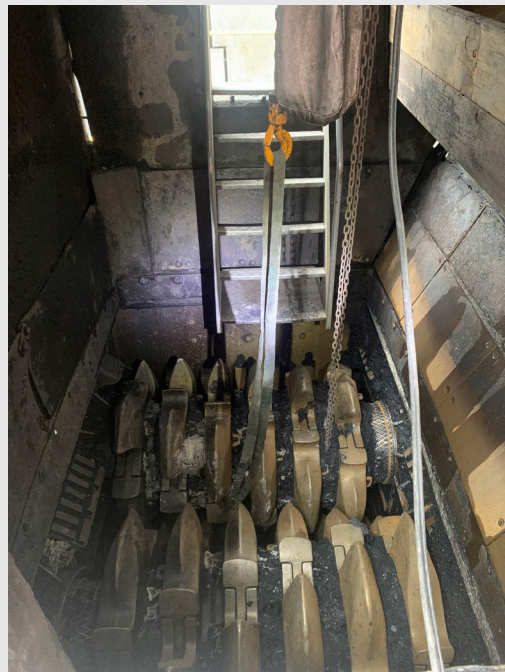
Summarised incidents

INCIDENT TYPE	SUMMARY	COMMENTS TO INDUSTRY
Dangerous incident IncNot0043194 Open cut coal mine	A truck operator reversed a dump truck into a dozer on a dump. The dozer was parked in the correct position next to the windrow waiting for the truck to dump. As the dump truck was reversed, the operator lost sight of the dozer and continued to reverse. The position 6 wheel contacted the dozer's ripper box.	Operators must stop and reassess if they lose vision of other plant and equipment while reversing. They must not proceed placing other workers at risk.



Dangerous incident
IncNot0043194
Open cut coal mine

A worker received an electric shock while working in a confined space. The worker was standing over a sizer at the time of the shock. The worker was wearing gloves and was holding a fibre sling. The sling was attached to the hook of a small trolley-crane mounted on an overhead I-beam. A witness observed a blue spark from the crane moments after the shock occurred.



Cables that form part of a spring-loaded cable reeler arrangement must have adequate support to prevent any tension being applied to the glands / termination connections.

Mines should ensure that their maintenance strategies cover all cables and components for any signs of tension or wear.

Other publications of interest

The incidents are included for your review. The NSW Resources Regulator does not endorse the findings or recommendations of these incidents. It is your legal duty to exercise due diligence to ensure the business complies with its work health and safety obligations.

PUBLICATION	ISSUE/TOPIC
International (other, non-fatal)	
NZ Minex	<p>Three workers were changing a screen mesh inside a mobile screen. Worker A was inside the screen box supporting the bottom end of the screen whilst worker B was at the opposite end prying the screen out of the seat rail the mesh sits in. As worker B pried the screen forward out of the seat, the end worker A was supporting slipped off the screen tube causing him to fall forward and knock his head, which resulted in him breaking his nose on the steel cross bar in the screen.</p> <p>Read more</p>
National (other, non-fatal)	
Resources Safety & Health Queensland	<p>Routine testing of a 24mm roof bolt nut at an underground coal mine found a crack running through the face of the nut. Additional testing identified that the same issue had affected a small number of other roof bolt nuts, prompting the mine to replace current stocks of the items. Roof bolt nuts are used to support roof materials in underground coal mines. Faults in roof bolt nuts could potentially compromise the integrity of roof support commonly used in underground mine roadways. Site Senior Executives should review their testing regime to ensure that a good sample size of items have been tested and conduct additional testing if defective items have been identified.</p> <p>Read more</p>
Resources Safety & Health Queensland	<p>Lightning conditions during storms create hazards that need to be managed by operators to ensure that risk to workers remains at an acceptable level. RSHQ's resources safety acts require that risk from operations must remain at an acceptable level at all times and that steps should be taken to eliminate hazards where it is reasonable to do so. The safest way to eliminate hazards related to lightning conditions is to cease activities when lightning is detected within close proximity to a work site. RSHQ recently commissioned an expert review to consider the hazards arising from conducting operation during lightning activity and their relative risk to the safety of resources workers. The report identified 10 hazards relating to the use of vehicles during lightning conditions. Each hazard</p>

has been assessed to establish the qualitative change in risk from the standard situation where work ceases, and workers remain in a safe shelter until the lightning activity has passed.

[Read more](#)

Note: While the majority of incidents are reported and recorded within a week of the event, some are notified outside this time period. The incidents in this report therefore have not necessarily occurred in a one-week period. All newly recorded incidents, whatever the incident date, are reviewed by the Chief Inspector and senior staff each week. For more comprehensive statistical data refer to our annual performance measures reports.

© State of New South Wales through Regional NSW 2022 You may copy, distribute, display, download and otherwise freely deal with this publication for any purpose, provided that you attribute Regional NSW as the owner. However, you must obtain permission if you wish to charge others for access to the publication (other than at cost); include the publication in advertising or a product for sale; modify the publication; or republish the publication on a website. You may freely link to the publication on a departmental website.

Disclaimer: The information contained in this publication is based on knowledge and understanding at the time of writing (October 2022) and may not be accurate, current or complete. The State of New South Wales (including Regional NSW), the author and the publisher take no responsibility, and will accept no liability, for the accuracy, currency, reliability or correctness of any information included in the document (including material provided by third parties). Readers should make their own inquiries and rely on their own advice when making decisions related to material contained in this publication.

DOCUMENT CONTROL

CM9 reference	DOC22/292670
Mine safety reference	ISR22-41
Date published	21 October 2022
Approved by	Deputy Chief Inspector Office of the Chief Inspector