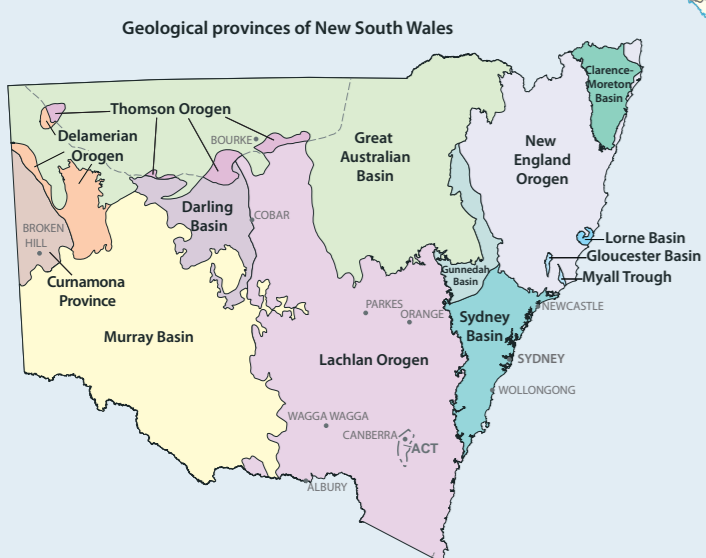
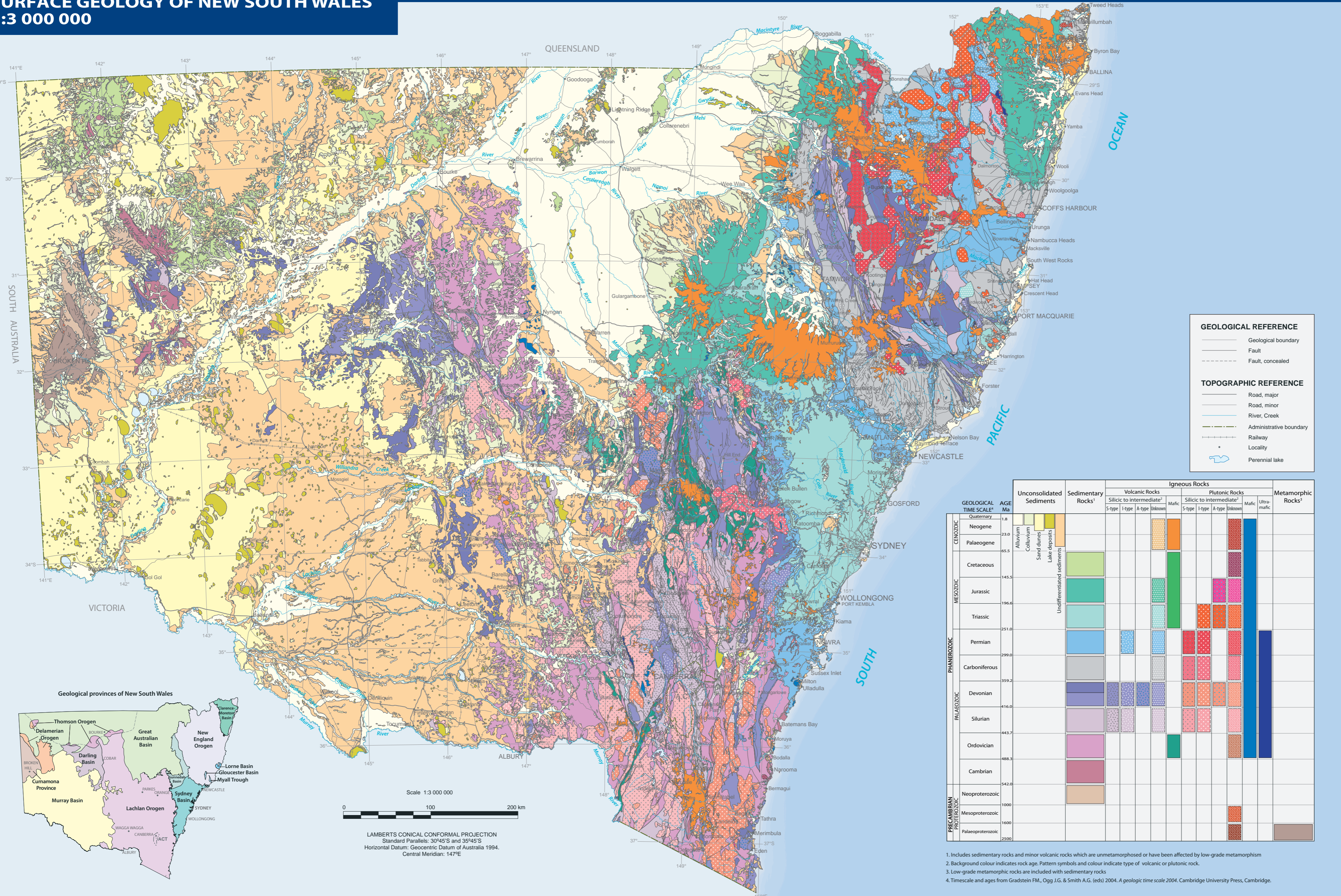


# SURFACE GEOLOGY OF NEW SOUTH WALES

## 1:3 000 000



Scale 1:3 000 000  
 0 100 200 km

LAMBERTS CONICAL CONFORMAL PROJECTION  
 Standard Parallels: 30°45'S and 35°45'S  
 Horizontal Datum: Geocentric Datum of Australia 1994.  
 Central Meridian: 147°E

**GEOLOGICAL REFERENCE**

- Geological boundary
- Fault
- Fault, concealed

**TOPOGRAPHIC REFERENCE**

- Road, major
- Road, minor
- River, Creek
- Administrative boundary
- Railway
- Locality
- Perennial lake

GEOLOGICAL TIME SCALE	AGE Ma	Unconsolidated Sediments	Sedimentary Rocks <sup>1</sup>	Igneous Rocks						Metamorphic Rocks <sup>3</sup>
				Volcanic Rocks			Plutonic Rocks			
				S-type	I-type	A-type	S-type	I-type	A-type	
CENOZOIC	Quaternary									
	Neogene	Alluvium Colluvium Sand dunes Lake deposits								
MESOZOIC	Palaeogene									
	Cretaceous									
	Jurassic									
PHANEROZOIC	Triassic									
	Permian									
	Carboniferous									
	Devonian									
PALAEOZOIC	Silurian									
	Ordovician									
	Cambrian									
	Neoproterozoic									
PRECAMBRIAN PROTZOZOIC	Mesoproterozoic									
	Palaeproterozoic									

1. Includes sedimentary rocks and minor volcanic rocks which are unmetamorphosed or have been affected by low-grade metamorphism  
 2. Background colour indicates rock age. Pattern symbols and colour indicate type of volcanic or plutonic rock.  
 3. Low-grade metamorphic rocks are included with sedimentary rocks  
 4. Timescale and ages from Gradstein FM., Ogg J.G. & Smith A.G. (eds) 2004. *A geologic time scale 2004*. Cambridge University Press, Cambridge.

**CREDITS**

**Bibliographical reference:** GEOLOGICAL SURVEY OF NEW SOUTH WALES 2009. *Surface geology of New South Wales — 1:3 000 000 map*. Geological Survey of New South Wales, NSW Department of Primary Industries, Maitland, NSW, Australia.

**Geology data compiled and edited by:** J. Xie, G.P. Colquhoun (Geological Survey of New South Wales) O.L. Raymond, S.F. Liu, A.J. Retter, D. Phillips, A. Kernich, D.S. Percival & C. MacGregor (Geoscience Australia).

**Map surrounds by:** G.P. Colquhoun.

**Technical editing by:** J.E. Greenfield, P.L. Blevin, W.J. Stroud & D.J. Fogson.

**Editing by:** R.A. Facer & N.S. Meakin.

**Cartography by:** G.P. Colquhoun.  
 Topographic base map data were compiled and extensively edited by A. Valja from digital data supplied by the NSW Department of Lands, Bathurst.

**Printed by:** NSW Department of Lands, Panorama Avenue, Bathurst, New South Wales

**Published by:** NSW Department of Primary Industries 2009

© State of New South Wales through NSW Department of Primary Industries 2009. You must obtain permission from NSW Department of Primary Industries to copy, distribute, display or store in electronic form any part of this publication, except as permitted under the Copyright Act 1968 (Commonwealth).

**Disclaimer**  
 The information contained in this publication is based on knowledge and understanding at the time of writing (March 2009). However, because of advances in knowledge, users are reminded of the need to ensure that information upon which they rely is up to date and to check currency of the information with the appropriate officer of NSW Department of Primary Industries or the user's independent adviser.

Recognising that some of the information in this document is provided by third parties, the State of New South Wales, the author and the publisher take no responsibility for the accuracy, currency, reliability and correctness of any information included in the document provided by third parties.

Copies of this map can be ordered from the NSW Department of Primary Industries, Mineral Resources.

Maitland Office  
 516 High St  
 Maitland NSW 2320  
 Australia  
 Ph: +61 2 4931 6666



Email: mineralpublication.orders@dpi.nsw.gov.au  
 Internet: www.dpi.nsw.gov.au

Geological Survey of New South Wales

# SURFACE GEOLOGY OF NEW SOUTH WALES

## 1:3 000 000

