

WEEKLY INCIDENT SUMMARY

Week ending Friday 5 August 2022

This incident summary provides information on reportable incidents and safety advice for the NSW mining industry. To report an incident to the NSW Resources Regulator: phone 1300 814 609 24 hours a day, 7 days a week.

At a glance

High level summary of emerging trends and our recommendations to operators.

TYPE	NUMBER
Reportable incident total	26
Summarised incident total	2

Summarised incidents

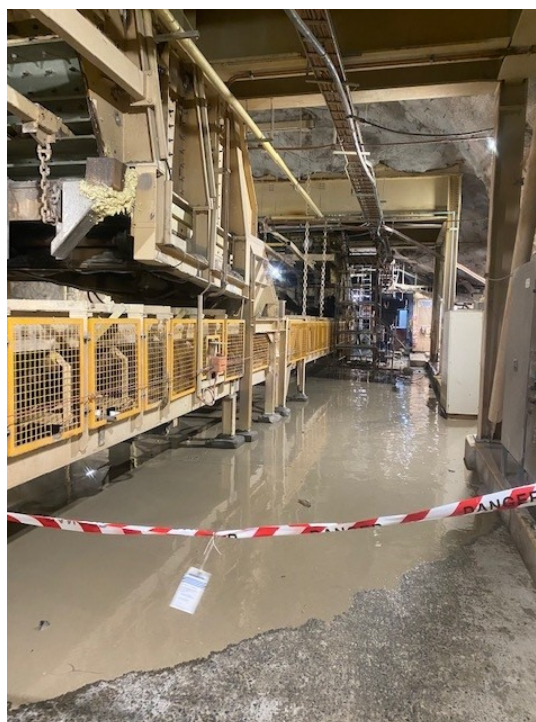
INCIDENT TYPE	SUMMARY	COMMENTS TO INDUSTRY
Dangerous incident IncNot0042740 Underground metals mine	<p>An inrush of water hit 2 workers who were at the base of a feed bin at an underground loading station. They both suffered bruises and abrasions.</p> <p>The workers were around scaffolding at the base of the bin during a shutdown maintenance period.</p> <p>The bin was empty of ore material at the time. Boards supported by acrow props were placed to prevent small pieces of ore from the bin falling onto the workers. The boards resulted in a volume of water accumulating in the bin and when the water was released, it hit the workers with force and pushed them onto the scaffolding.</p>	<p>During shutdowns, risk assessments must consider water and material accumulation and material flow as a hazard when working on, in and around bins, chutes and conveyors.</p> <p>When developing the control measures to manage the risks of inundation or inrush of any substance, mines must consider the:</p> <ul style="list-style-type: none"> • failure or blocking of the flow channels • potential for the accumulation of water or materials that could liquefy



or flow into other workings or locations

- potential for control systems to introduce unexpected sources of material, such as valves, opening automatically.

Refer to [CHPP Sump water inrush](#) a video provided by a NSW mine to share learnings.



High potential incident
IncNot0042679
Underground coal mine

Several workers exceeded the occupational exposure limit for respirable quartz while working on a longwall cutting coal. The exceedances were low level.

When cutting increased amounts of stone on a longwall, additional controls must be put in place to protect workers from exposure to dust.

Airborne dust and other contaminants



The shearer was cutting varying amounts of stone across the face. A stone band and fault were also present on the face. During the shift, all workers were observed wearing respiratory protection and sprays were operational.

The position of workers away from dust sources should be a high priority. Task rotation between workers should also be considered but is an administrative control. Controls such as sprays must be regularly maintained, and additional sprays should be considered. The frequency of maintenance of risk control measures should be increased during periods when additional dust may be generated.

Other publications of interest

The incidents are included for your review. The NSW Resources Regulator does not endorse the findings or recommendations of these incidents. It is your legal duty to exercise due diligence to ensure the business complies with its work health and safety obligations.

PUBLICATION	ISSUE/TOPIC
National (other, non-fatal)	
<p>SafeWork Australia</p>	<p>Preventing psychological harm is an essential part of creating a healthy and safe workplace. The model work health and safety (WHS) laws now include regulations on psychosocial hazards. A new model <i>Code of practice on managing psychosocial hazards at work</i> explains the laws and how to comply with them, including practical steps to manage workplace risks to psychological health. Safe Work Australia Chief Executive Officer Michelle Baxter said ‘under work health and safety laws, PCBUs have a positive duty to do everything they reasonably can to prevent exposure to psychosocial hazards and risks’.</p> <p>Details</p>

Note: While the majority of incidents are reported and recorded within a week of the event, some are notified outside this time period. The incidents in this report therefore have not necessarily occurred in a one-week period. All newly recorded incidents, whatever the incident date, are reviewed by the Chief Inspector and senior staff each week. For more comprehensive statistical data refer to our annual performance measures reports.

© State of New South Wales through Regional NSW 2022 You may copy, distribute, display, download and otherwise freely deal with this publication for any purpose, provided that you attribute Regional NSW as the owner. However, you must obtain permission if you wish to charge others for access to the publication (other than at cost); include the publication in advertising or a product for sale; modify the publication; or republish the publication on a website. You may freely link to the publication on a departmental website.

Disclaimer: The information contained in this publication is based on knowledge and understanding at the time of writing (August 2022) and may not be accurate, current or complete. The State of New South Wales (including Regional NSW), the author and the publisher take no responsibility, and will accept no liability, for the accuracy, currency, reliability or correctness of any information included in the document (including material provided by third parties). Readers should make their own inquiries and rely on their own advice when making decisions related to material contained in this publication.

DOCUMENT CONTROL

CM9 reference DOC22/221331

Mine safety reference ISR22-31

Date published 12 August 2022

Approved by Deputy Chief Inspector
Office of the Chief Inspector