



**NSW
Resources
Regulator**

MONTHLY BUSINESS ACTIVITIES REPORT

February 2022



Document control

Published by NSW Resources Regulator

Title: Monthly business activities report – February 2022

First published: March 2022 (data current at 3 March 2022)

Authorised by: Executive Director NSW Resources Regulator

CM9 reference: RDOC22/20216

AMENDMENT SCHEDULE

Date	Version	Amendment

© State of New South Wales through Regional NSW 2022. You may copy, distribute, display, download and otherwise freely deal with this publication for any purpose, provided that you attribute Regional NSW as the owner. However, you must obtain permission if you wish to charge others for access to the publication (other than at cost); include the publication in advertising or a product for sale; modify the publication; or republish the publication on a website. You may freely link to the publication on a departmental website.

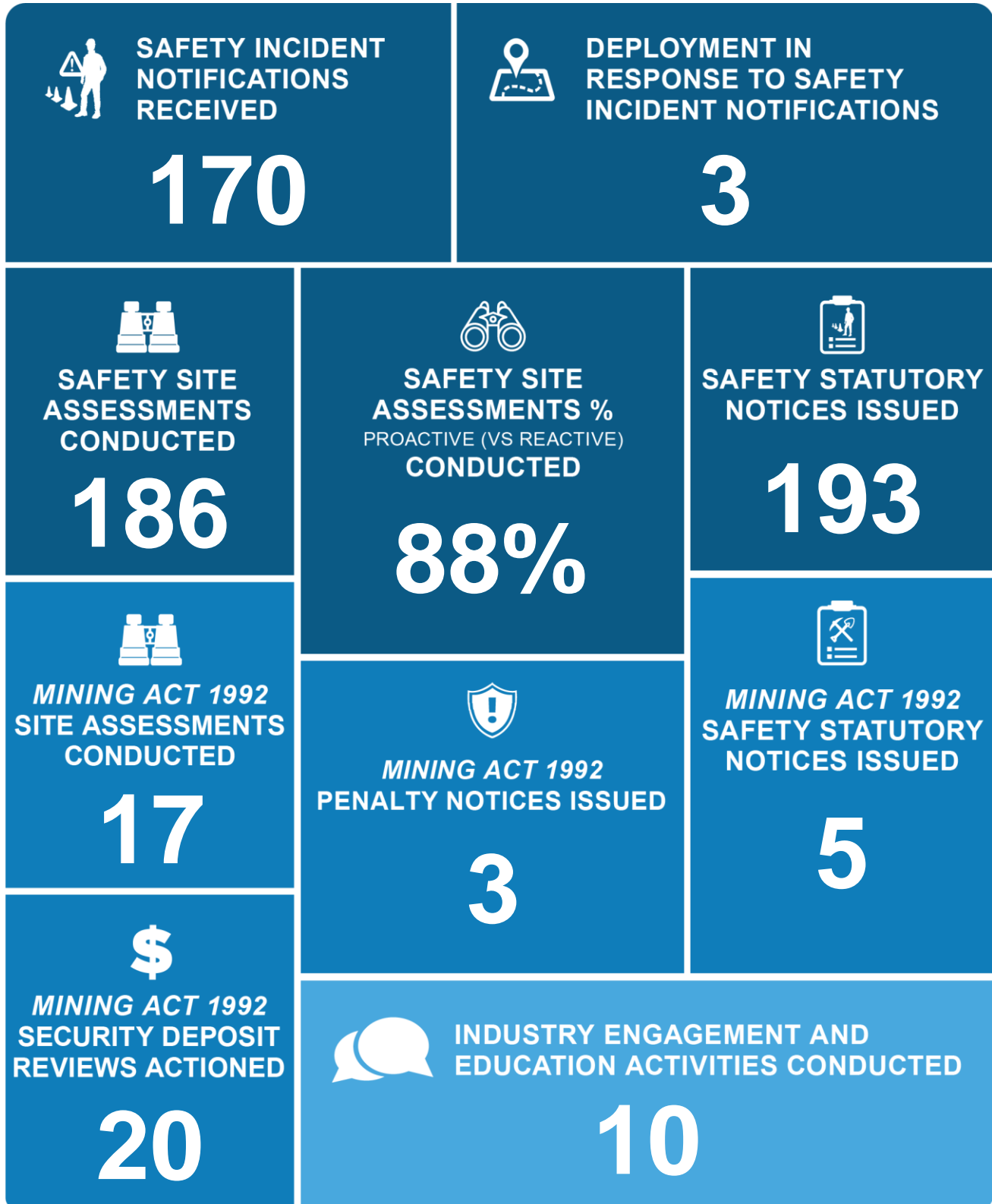
Disclaimer: The information contained in this publication is based on knowledge and understanding at the time of writing (March 2022) and may not be accurate, current or complete. The State of New South Wales (including Regional NSW), the author and the publisher take no responsibility, and will accept no liability, for the accuracy, currency, reliability or correctness of any information included in the document (including material provided by third parties). Readers should make their own inquiries and rely on their own advice when making decisions related to material contained in this publication.

Contents

- Activities at a glance 4
- Key activities..... 5
- Work Health and Safety activities 6
 - Safety incident notifications 6
 - Targeted assessment program 6
 - Safety compliance – prohibition notices 6
 - Mining authorisation activities..... 7
- Mining Act 1992* regulatory activities..... 8
 - Compliance activities 8
- Industry engagement activities..... 10
 - Committees and other industry body involvement 10
 - External education and engagement activities 11
 - Publication and alerts 11

Activities at a glance

Summary of our regulatory activities



Key activities

The NSW Resources Regulator published the following investigation and safety bulletins:

- an [information sheet](#) on certificate of conformity condition on design registrations for Explosion Protected Diesel Engine Systems (ExDES)
- five [weekly incident summaries](#) highlighting 16 dangerous incidents

Other publications as related to key activities included:

- acceptance of a WHS [enforceable undertaking](#) from Winder Controls Australia Pty Ltd following investigation into an incident on 6 October 2020 where the head sheave pulley wheel dislodged from its support frame in the drift winder and fell to the ground almost injuring a worker
- rejection of a WHS [enforceable undertaking](#) given by Endeavour Coal Pty Ltd in relation to an incident on 8 June 2019 where a worker suffered serious injuries after becoming trapped in scraper conveyor
- commencement of MSAC Safety Reporting [Survey](#) for the NSW coal mining industry
- announcement of upcoming collision avoidance [events](#) throughout 2022, and the 2022 Small Mines Roadshows [events](#).
- compliance [audit reports](#) relating to exploration licences held by Goldreef Resources Pty Ltd, Thomson Resources Ltd, Oxley Exploration Pty Ltd/Isokind Pty Ltd and Peak Gold Mines Pty Ltd.

For more activities refer to [Mine Safety News](#) and [Mine Rehabilitation News](#).

Work Health and Safety activities

Safety incident notifications

DETAILS OF SAFETY INCIDENTS WHERE INSPECTORS WERE DEPLOYED

DATE NOTIFIED	REPORTING SECTOR	HAZARD	INCIDENT
1 Feb	Coal mines	Mechanical engineering control plan	A motor room crane failed to hold a load, allowing the load to fall uncontrolled from height.
8 Feb	Coal mines	Fire or explosion	A truck omitted flame from catalytic converter, and upon investigation a build-up of explosive product was found behind the converter cover.
13 Feb	Coal mines	Ground or strata failure	A dozer was working at stockpile when a ground void opened in the vicinity.
TOTAL			3

Targeted assessment program

DETAILS OF TARGETED SAFETY SITE ASSESSMENTS*

SECTOR	HAZARD / CONTROL PLAN	NO.
Coal mines	Hazard/Control plan - Electrical Engineering Control Plan	1
Grand Total		1

*Includes site assessments conducted virtually

Safety compliance – prohibition notices

Prohibition notices issued this month under section 195 of the *Work Health and Safety Act 2011*.

PROHIBITION NOTICES ISSUED

ISSUED TO PCBU*	MINE LOCATION	PROHIBITED ACTIVITY
Bloomfield Collieries Pty Ltd	Rixs Creek Mine	Removal of dozer from stockpile.
Boggabri Coal Operations Pty Ltd	Boggabri Coal Mine - Open Cut	Removal or replacing front wheel hubs on spindles on specified trucks.
Mt Arthur Coal Pty Ltd	Mt Arthur North - (incl CHPP)	Operation of specified truck other than to continue investigation into fire.

ISSUED TO PCBU*	MINE LOCATION	PROHIBITED ACTIVITY
Narrabri Coal Operations Pty Ltd	Narrabri Colliery	Dry drilling on the specified face.
Tomingley Gold Operations Pty Ltd	Tomingley Gold Mine	Ore and waste haulage below the switchback, with exception of material needed for road/ramp construction.
TOTAL		5

*Person conducting a business or undertaking

Mining authorisation activities

EXEMPTION APPLICATIONS REFUSED

No applications requesting exemption from specific provisions of the Work Health and Safety (Mines and Petroleum Sites) Regulation 2014 were refused this month.

HIGH RISK ACTIVITY NOTIFICATIONS RECEIVED

MINE	LEGISLATION*	TYPE OF NOTIFICATION	NO.
Appin Colliery	WHS(MPS) Reg Sch 3 cl 15	The formation of a pillar other than a conforming pillar.	1
Dendrobium Colliery	WHS(MPS) Reg Sch 3 cl 16(1)(a)	Secondary extraction by longwall mining, shortwall mining or miniwall mining	1
Mandalong Mine	WHS(MPS) Reg Sch 3 cl 15	The formation of a pillar other than a conforming pillar.	1
Narrabri Colliery	WHS(MPS) Reg Sch 3 cl 12	Driving on underground roadway with a width greater than 5.5 metres.	1
Northparkes Mines	WHS(MPS) Reg Sch 3 cl 35	The establishment, operation, alteration or decommissioning of a tailings storage facility.	1
Tahmoor Colliery	WHS(MPS) Reg Sch 3 cl 10	Sealing (other than emergency sealing), but only if notice has not been given as part of a notice for secondary extraction.	1
Wambo Coal Handling & Preparation Plant	WHS(MPS) Reg Sch 3 cl 27	The establishment, operation, alteration or decommissioning of an emplacement area.	1
TOTAL		7	

*Work Health and Safety (Mines and Petroleum Sites) Regulation 2014

Mining Act 1992 regulatory activities

Compliance activities

Statutory notices issued

NOTICES OF DIRECTIONS ISSUED DETAILS

ISSUED TO	LOCATION	SUMMARY S.240 OF THE MINING ACT 1992 DIRECTION
Macquarie Marble and Lime Pty Ltd	ML 1446 (1992)	Properly and adequately secure the entry point to ML 1446 on the Western side of the mine footprint. This point must be secured to prevent vehicle access. Install an appropriate sign on any barrier or fence erected to alert to the fact that access is prohibited to the public.
Perilya Broken Hill Limited	Potosi Operations	Nominate for the approval of the Resources Regulator a suitably qualified and experienced soil science expert to undertake characterisation analysis of the soils and materials on the mine site to determine the management and amelioration measures that will need to be implemented to achieve rehabilitation outcomes at the Perilya Broken Hill Limited Potosi Mine. Submit a final report prepared by the suitably qualified expert engaged.
Perilya Broken Hill Limited	North Mine	Nominate for the approval of the Resources Regulator a suitably qualified and experienced soil science expert to undertake characterisation analysis of the soils and materials on the mine site to determine the management and amelioration measures that will need to be implemented to achieve rehabilitation outcomes at the Perilya Broken Hill Limited North Mine. Submit a final report prepared by the suitably qualified expert engaged.
Perilya Broken Hill Limited	Southern Operations	Nominate for the approval of the Resources Regulator a suitably qualified and experienced soil science expert to undertake characterisation analysis of the soils and materials on the mine site to determine the management and amelioration measures that will need to be implemented to achieve rehabilitation outcomes at the Perilya Broken Hill Limited Southern Operations. Submit a final report prepared by the suitably qualified expert engaged.
Sibelco Australia Limited	ML 1466 (1992)	<p>Undertake all necessary rehabilitation work(s) at Stubby Clay Mine in order to achieve the rehabilitation objectives and completion criteria specified in the Stubbo Clay Mine MOP.</p> <p>Prepare and submit to the Regulator a rehabilitation report for the period 1 January 2022 – 31 December 2022 which addresses listed reporting requirements.</p> <p>Prepare and submit to the Regulator a rehabilitation report for the period 1 January 2023 – 31 December 2023 which addresses listed reporting requirements.</p>

ISSUED TO	LOCATION	SUMMARY S.240 OF THE <i>MINING ACT 1992</i> DIRECTION
		<p>Prepare and submit to the Regulator a rehabilitation report for the period 1 January 2024 – 31 December 2024 which addresses listed reporting requirements.</p> <p>Prepare and submit to the Regulator a rehabilitation report for the period 1 January 2025 – 31 December 2025 which addresses listed reporting requirements.</p>
TOTAL		5

Key enforcement actions

MINING ACT 1992 KEY ENFORCEMENT ACTIONS

DATE	ENTITY	AUTHORITY	ACTION	AMOUNT	ALLEGATION/FINDING
28 Feb	Forbex Pty Ltd	EL 8731 (1992)	Penalty Notice	\$1,000	Contravention of s292c of the <i>Mining Act 1992</i> for failing to pay rent and levy fees.
28 Feb	Volcan Australia Corporation Pty Ltd	EL 7301 (1992)	Penalty Notice	\$1,000	Contravention of s292c of the <i>Mining Act 1992</i> for failing to pay rent and levy fees.
28 Feb	National Granite Pty Ltd	EL 8371	Penalty Notice	\$2,500	Contravention of s378C of the <i>Mining Act 1992</i> for providing false or misleading information.
TOTAL					3

Industry engagement activities

Committees and other industry body involvement

COMMITTEES AND OTHER INDUSTRY BODY INVOLVEMENT

COMMITTEE / BODY	DETAIL
Standards Association – earthmoving equipment	Meeting
Fire and Rescue NSW-led multiagency research collaborative research program - Lithium ion battery fires	Initial workshop
Cobar Local Emergency Management Committee and Local Rescue Committee	Quarterly meeting
Far Western Local Emergency Management Committee and Local Rescue Committee	Quarterly meeting
Gunnedah Local Emergency Management Committee and Local Rescue Committee	Quarterly meeting
Maitland Local Emergency Management Committee and Local Rescue Committee	Quarterly meeting
Wollondilly Local Emergency Management Committee and Local Rescue Committee	Quarterly meeting
Total	7

External education and engagement activities

WORKSHOPS AND INFORMATION SESSIONS

TYPE OF ACTIVITY	LOCATION	DETAIL
Industry Forum	Newcastle	Small Mines Roadshow
Industry Forum	Mulwala	Small Mines Roadshow
Industry Forum	Tamworth	Small Mines Roadshow
TOTAL		3

Publication and alerts

MEDIA RELEASES, SAFETY BULLETINS AND PUBLICATIONS

TYPE	NUMBER
Enforceable undertaking	2
Guidance material	2
Mine safety news	2
Reports	8
Weekly summary	5
Grand Total	19