

WEEKLY INCIDENT SUMMARY

Week ending Friday 24 September 2021


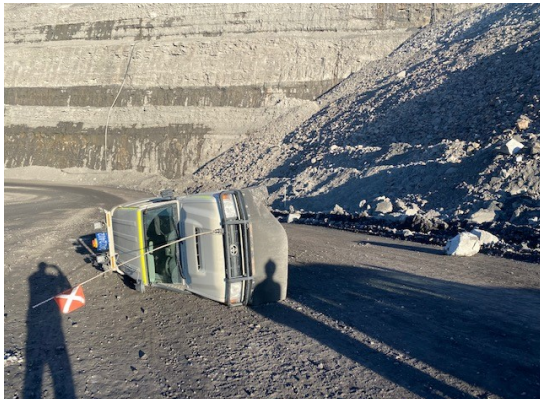
This incident summary provides information on reportable incidents and safety advice for the NSW mining industry. To report an incident to the NSW Resources Regulator: phone 1300 814 609, 24 hours a day, 7 days a week.

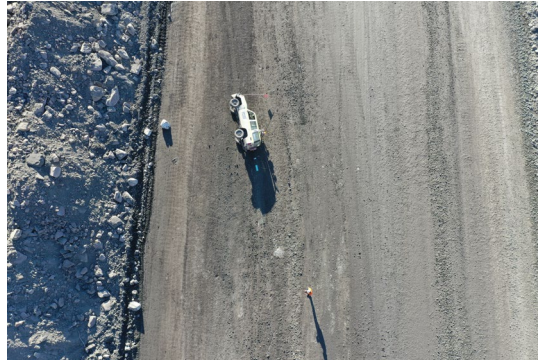
At a glance

High-level summary of emerging trends and our recommendations to operators.

TYPE	NUMBER
Reportable incident total	43
Summarised incident total	2

Summarised incidents

INCIDENT TYPE	SUMMARY	COMMENTS TO INDUSTRY
Dangerous incident IncNot0040774 Open cut coal mine  Roads or other vehicle operating areas	<p>A light vehicle overturned when it hit a large rock that was sitting on the haul road. The driver did not see the rock due to the rising sun obscuring his vision. The driver was uninjured and was able to exit the vehicle unaided.</p> 	<p>Multiple incidents of this nature have been notified recently and mine operators should communicate this to their workers and reinforce relevant controls.</p> <p>Drivers must maintain focus on the task at hand. When visibility is affected, drivers should find a safe place to stop and address the issue, rather than continuing to drive on. Roadway and intersection designs must consider all environmental factors that could affect visibility, including sunlight.</p>



Dangerous incident
IncNot0040784
Underground
metalliferous mine



Ground or strata
failure

A jumbo was conducting rehabilitation work for a mine expansion. A fall of ground occurred while fitting the mesh to the roof. The area had not yet been supported. The right-hand boom was buried under rock. The nipper was standing behind the jacks of the machine and the operator was in the cab. Both workers were uninjured.



Operators must maintain vigilance when working near unsupported ground and be conscious of their position. When determining ground support standards, the whole of mine life requirements and potential expansions should be considered.

Note: While the majority of incidents are reported and recorded within a week of the event, some are notified outside this time period. The incidents in this report therefore have not necessarily occurred in a one-week period. All newly recorded incidents, whatever the incident date, are reviewed by the Chief Inspector and senior staff each week. For more comprehensive statistical data refer to our annual performance measures reports.

© State of New South Wales through Regional NSW 2020 You may copy, distribute, display, download and otherwise freely deal with this publication for any purpose, provided that you attribute Regional NSW as the owner. However, you must obtain permission if you wish to charge others for access to the publication (other than at cost); include the publication in advertising or a product for sale; modify the publication; or republish the publication on a website. You may freely link to the publication on a departmental website.

Disclaimer: The information contained in this publication is based on knowledge and understanding at the time of writing (October 2021) and may not be accurate, current or complete. The State of New South Wales (including Regional NSW), the author and the publisher take no responsibility, and will accept no liability, for the accuracy, currency, reliability or correctness of any information included in the document (including material provided by third parties). Readers should make their own inquiries and rely on their own advice when making decisions related to material contained in this publication.

DOCUMENT CONTROL

CM9 reference	DOC21/850125
Mine safety reference	ISR21-38
Date published	1 October 2021
Approved by	Deputy Chief Inspector Office of the Chief Inspector